

THE WORK SHIRT SOME LIKE IT FITTED, SOME LIKE IT LOOSE.

Photography Assistant ANG JONG JYE Styling Assistants SHIRIN MEHDI, ASHLEY WONG

Hair: EILEEN KOH/HAIR PHILOSOPHY Makeup: DILY WANG Manicure: JOYCE CHANG Model: MARTINA MANNQUIN

Classic REVIVAL

*In the fickle world of fashion, wardrobe classics never fade. Still, it never hurts to take your golden oldies for a spin and give them a new, modern twist – even if that means breaking some rules along the way.
Photographed by GAN. Styled by ALICIA TAN.*

Whatever you decide,
take the unexpected
route and layer it
underneath a cosy
knit. Country Club chic
just got an upgrade.

*Cable knit jumper and
silk chiffon shirt, BOSS
Black Women.*

THE TWEED JACKET
IT HAS SEEN SEVERAL
CASUAL DAYS AND
MANY SMART DAYS.

You'll be surprised the wonders the tweed jacket can do when worn over a black-tie-worthy gown. Coco Chanel would approve.

Tweed jacket, leather cut-out maxi dress with sequins, jewelled cuff and bangle, all Chanel.

Sister to the ubiquitous black number, the Little Brown Dress is edgy and sexy without being obvious.

Leopard print silk toga dress and leather belt, Gucci. Metropolitan Dream bangles, all Damiani.

THE NEW LBD
IT'S THE NEXT
GUARANTEED
FAVOURITE FOR
COCKTAIL HOUR.



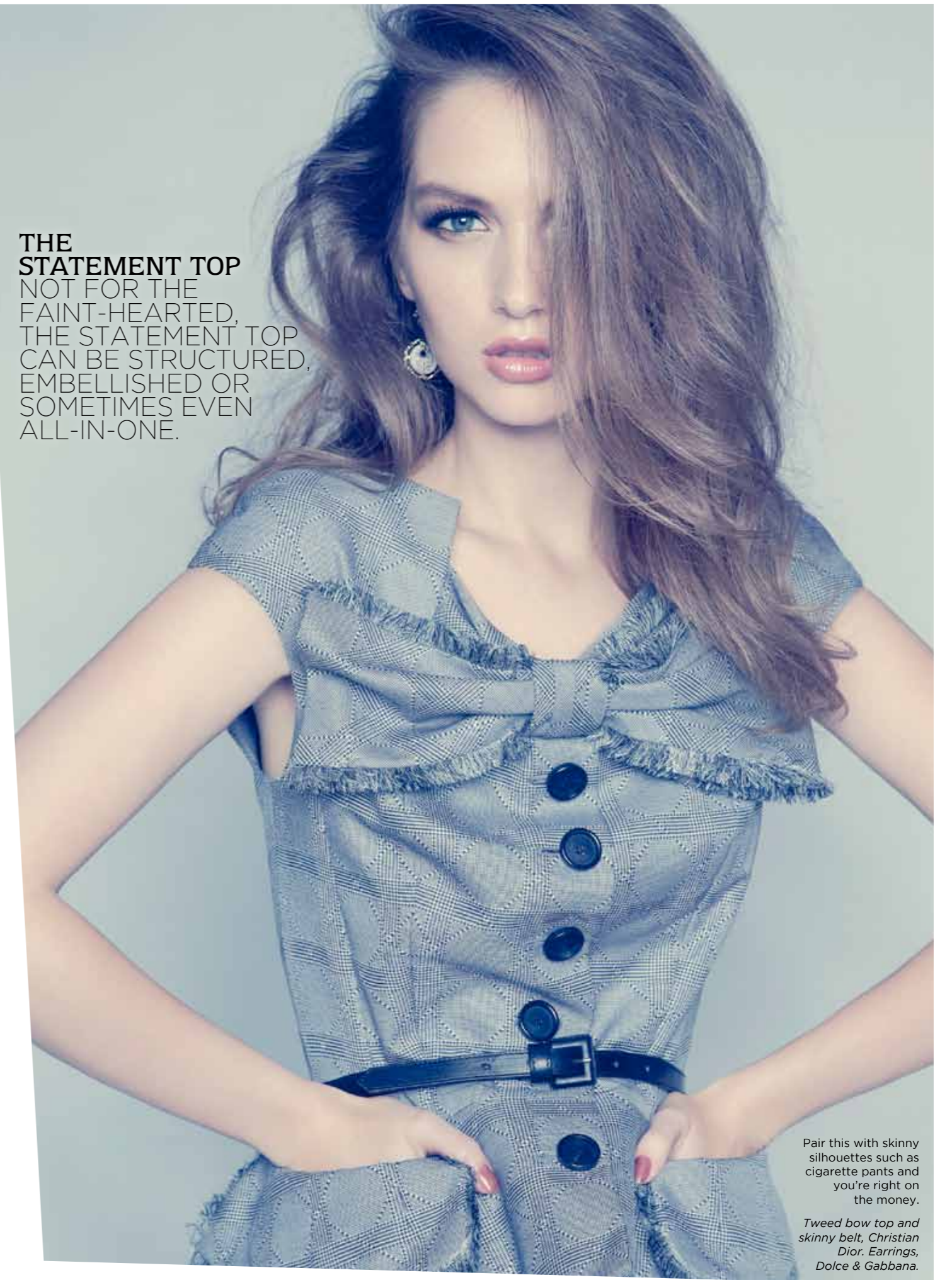


THE PENCIL SKIRT THIS WORK STAPLE HAS BEEN GIVEN A FACELIFT.

It's less serious and way cooler with a paper bag waist, so follow this cue and play things up with colour-blocking and skintight tops to boot.

Three-quarter-sleeve top; paper bag pencil skirt and skinny belt, all Bottega Veneta. Crystal studded bangles and patent leather peep-toe platforms, all Miu Miu.

THE
STATEMENT TOP
NOT FOR THE
FAINT-HEARTED,
THE STATEMENT TOP
CAN BE STRUCTURED,
EMBELLISHED OR
SOMETIMES EVEN
ALL-IN-ONE.



Pair this with skinny silhouettes such as cigarette pants and you're right on the money.

Tweed bow top and skinny belt, Christian Dior. Earrings, Dolce & Gabbana.

THE LEATHER JACKET
BIKER CHIC HAS LEFT THE BUILDING.

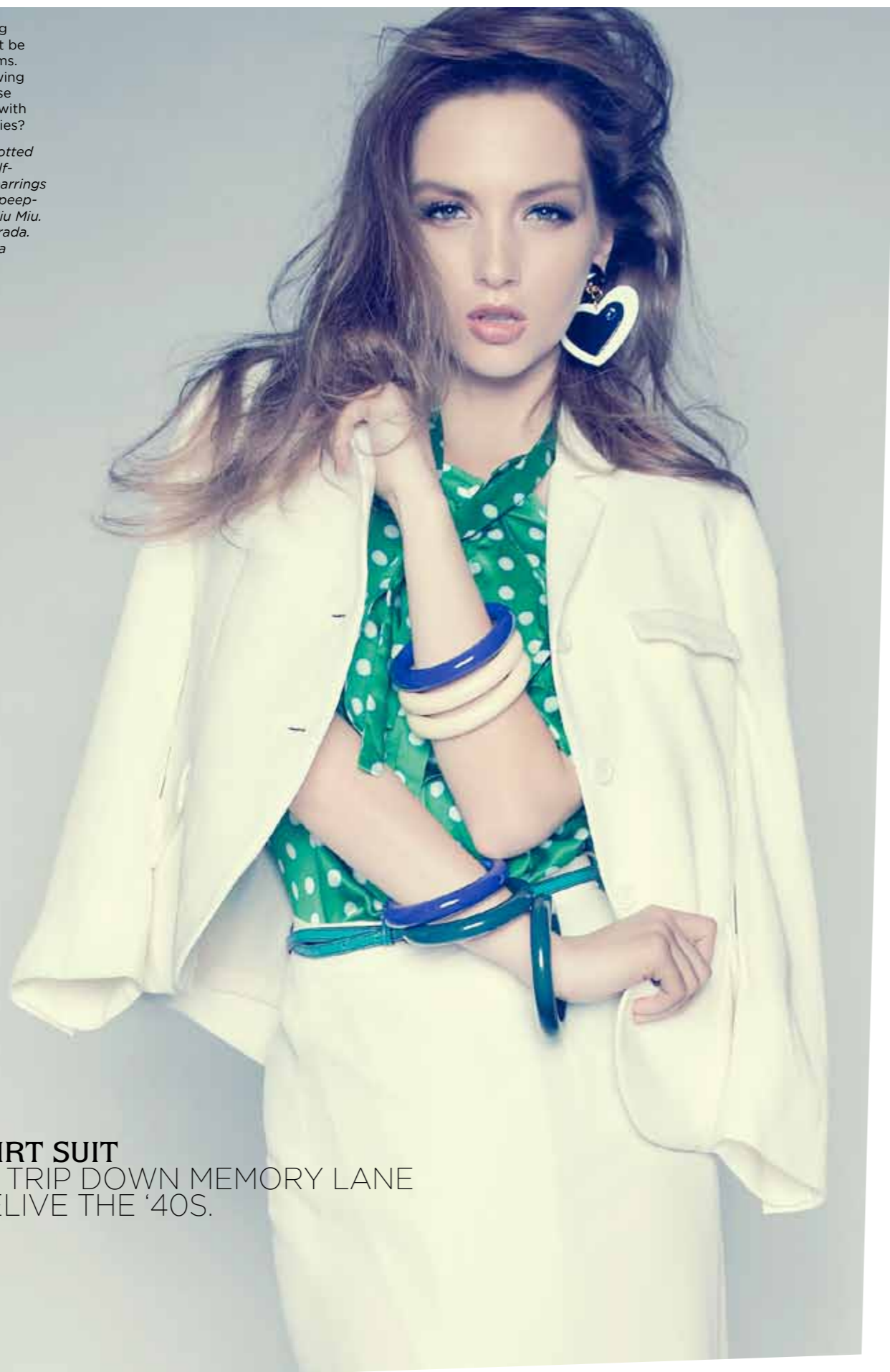
Leather has found a new home in blazers and double-breasted coats. Smart and cool mixed together, it's just what the fashion doctor ordered.

*Leather jacket and floral print shirt, Louis Vuitton.
Hoop earrings, Prada.*



With those lingering hemlines, you won't be revealing those gams. So how about showing the world your sense of humour instead with whimsical accessories?

Silk jacket; polka-dotted blouse with ties; calf-length skirt; heart earrings and patent leather peep-toe platforms, all Miu Miu. Bakelite bangles, Prada. Skinny belt, Bottega Veneta.



THE SKIRT SUIT

TAKE A TRIP DOWN MEMORY LANE AND RELIVE THE '40S.

THE WIDE-LEG PANT
FASHION STILL HASN'T GOTTEN OVER ITS OBSESSION WITH THE '90S AND ITS BILLOWY BOTTOMS.

Change things up by exaggerating the silhouette with a loose-fitting top and loud print.

Silk camisole with beads and silk pants with tie, Diane von Fürstenberg. Bakelite bangles, Prada. Crystal studded bangles, Miu Miu.



THE TRENCH COAT
TRENCH COATS
ALWAYS LEND AN
AIR OF MYSTERY
TO ANY LOOK.

Wear it like modern day
armour over soft silks
and chiffon - the perfect
balancing act.

*Trench coat with leather
belting and silk ruffled
dress, Burberry Prorsum.
Cocktail rings, Chanel.*

**THE
ANIMAL PRINT**
FANCY ANOTHER
SOJOURN TO THE
JUNGLE?

Animal prints need not
be subdued. Run wild
and pair this pattern
with hard-hitting
leather or go for gold
by mixing prints.

*Quilted leather jacket,
leopard print cardigan
and cashmere scarf, all
Dolce & Gabbana.*

