

Photography Assistants LYNN AVERSON & DARYL TAN Styling Assistant DEBBY KWONG Hair CALVIN GAN/HAIRLOOM DE JARDIN USING DAVINES Makeup SHAUN LEE USING CHANEL COLOURS Manicure JOYCE CHANG/Made DASHA/AVE

# Cruise CONTROL

We can't help but notice there's a post-apocalyptic air around us, what with the current economic climate and chilly weather. The season's Cruise 2012 collections are just what the doctor ordered to pull us out of this sombre mood. Filled with electric brights and pop art hues, it's time to inject colour back into our wardrobes in time for spring. Photographed by SKYE TAN Styled by ALICIA TAN

Spray paint printed parka, Issey Miyake. Crochet maxi dress, Dior.

(OPPOSITE PAGE)  
Silk chiffon shift dress with panels, Sportmax. Pearl embellished metal cuffs, Chanel. Patent leather T-strap pumps, Fendi.



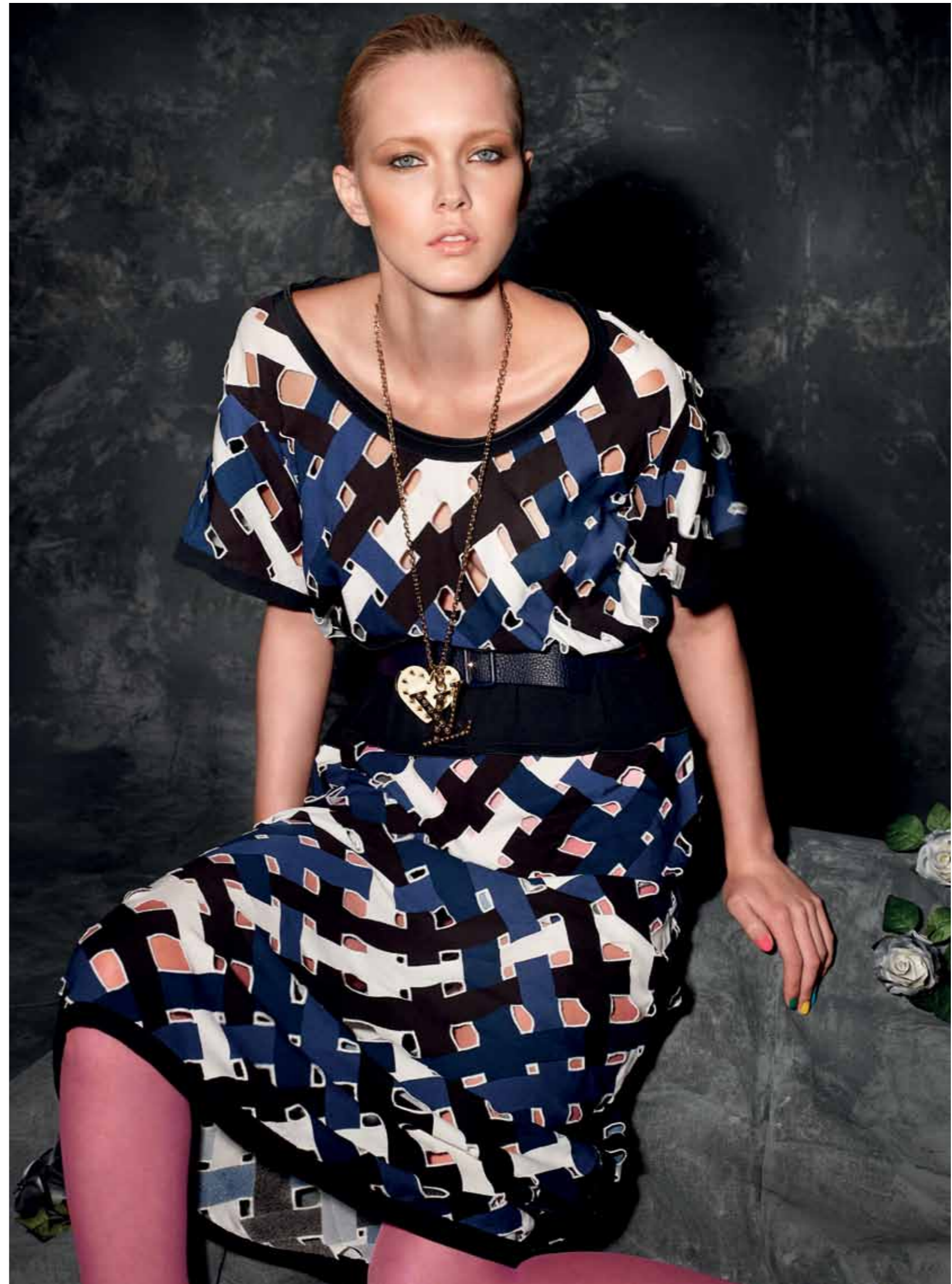
Tweed cape jacket, Chanel.  
Printed tulip skirt, H&M.  
Shark tooth choker, all Estelle  
Dévé at Front Row. Acrylic  
bangles, and peep-toe  
pumps, Dior.

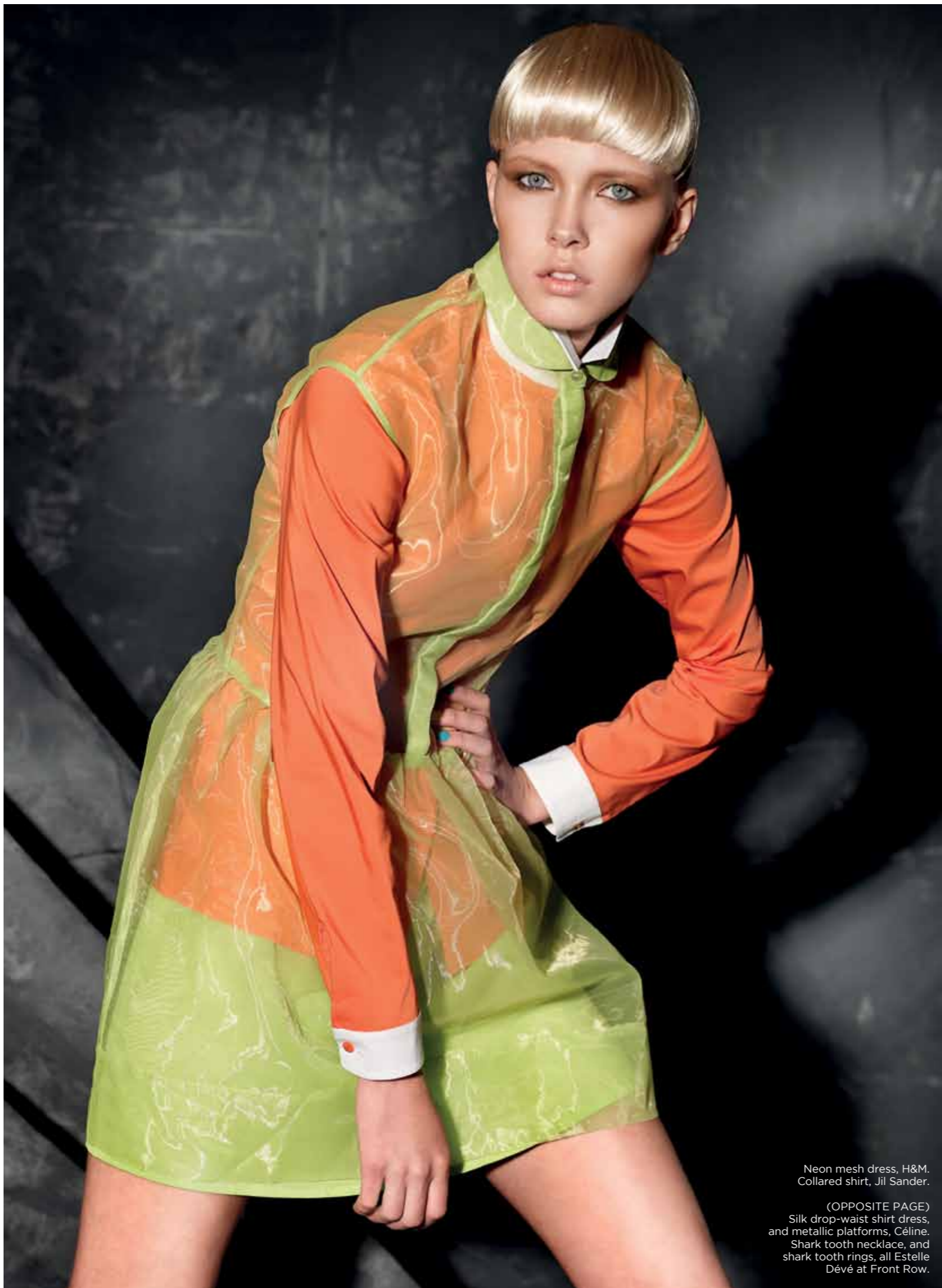
(OPPOSITE PAGE)  
Checked babydoll dress,  
paisley print scarf, and  
diamante bracelets, all Miu  
Miu. Geometric printed knee-  
high socks, Issey Miyake.  
Leather platforms, Céline.



Asymmetrical ruffle dress, Fendi. Knit tank, Prada. Pearl necklace, Chanel. Shark tooth rings, Estelle Dévé at Front Row. Suede booties, H&M.

(OPPOSITE PAGE)  
Cut-out tunic dress, leather belt, and charm necklace, all Louis Vuitton.





Neon mesh dress, H&M.  
Collared shirt, Jil Sander.

(OPPOSITE PAGE)  
Silk drop-waist shirt dress,  
and metallic platforms, Céline.  
Shark tooth necklace, and  
shark tooth rings, all Estelle  
Dévé at Front Row.

